

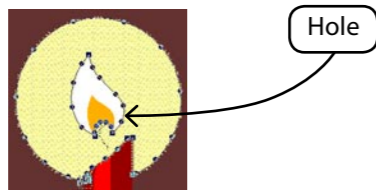
### Cross Stitch considerations

Cross Stitch digitizing has some special considerations.

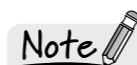
- > A "hole" can be digitized within a segment.
- > The size of the cross – the "cell size" can be changed **before** digitizing, or afterwards (through block editing).
- > The **outline** of a block can be changed (edited) **after** digitizing.

### Digitizing a Hole

Step	Action	Result
>1	Select <b>Digitizing</b> icon.	The devices toolbar will open.
>2	Select <b>Freeform</b> from the device toolbar.	The crosshair will include a "+" to signify <b>adding</b> points.
>3	Select <b>Cross Stitch</b> from the Fill Methods list (if a different method is displayed).	The next segment will be <b>filled</b> with Cross Stitches.
>4	Place points on <b>edge</b> of shape, moving, and deleting until satisfied.	
>5	Right-click and choose <b>Insert Hole</b> .	The previous (outline) segment will be "released" awaiting input for hole.
>6	Input <b>points for hole</b> .	
>7	Choose <b>Stitch It</b> from the <b>Digitizing</b> toolbar. Alternatively, right-click and choose <b>Stitch It!</b> from the pop-out menu.	The shape will be filled with stitches.



**Tip!**  
Digitizing a "Hole" in a Freeform segment should **always** be included when a shape is surrounded by another shape or color. Cross Stitch embroidery should not be layered.



**Note**  
It is also possible to Insert Hole in the Editing Mode. For additional details, see section called "Inside Block Editing".

**Image 1**  
Cross Stitch with hole

### Cell Size

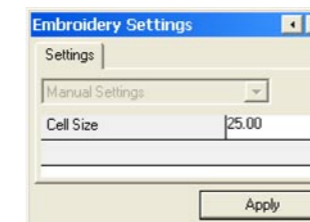
The Stitch & Sew software has the capability to set or change the cell size – the actual size of the cross.

### Setting the Cell Size

Step	Action	Result
>1	Select <b>Digitizing</b> icon.	The devices toolbar will open.
>2	Select <b>Freeform</b> from the device toolbar.	The crosshair will include a "+" to signify <b>adding</b> points.
>3	Select <b>Cross Stitch</b> from the Fill Methods list (if a different method is displayed).	The next segment will be <b>filled</b> with Cross Stitches.
>4	Right-click and choose <b>Embroidery Settings</b> from the pop-out menu.	An Embroidery settings dialogue box will open.
>5	Click on <b>Cell size</b> block (defaulted at 20.00) to highlight, and type new size.	
>6	Click <b>Apply</b> .	The next segment will have the selected cell size.

### Note


A Cross Stitch design can have different cell sizes for different blocks (segments). The default size is 20 (2mm).



**Image 1**  
Embroidery Settings / Cell Size

### Changing the Cell Size

If you have already digitized a block with Cross Stitch, and then want to **change the Cell Size**, you can easily do it through **editing mode**.

Step	Action	Result
>1	Select <b>Editing</b>  icon.	The editing toolbar will open.
>2	Click on the block for desired (cell size) change.	The selected block will be "highlighted" with original points.
>3	Right-click and choose <b>Embroidery Settings</b> from the pop-out menu.	An Embroidery settings dialogue box will open.
>4	Click on <b>Cell size</b> block (defaulted at 20.00) to highlight, and type new size.	
>5	Click <b>Apply</b> .	The selected Block will regenerate with new Cell Size.

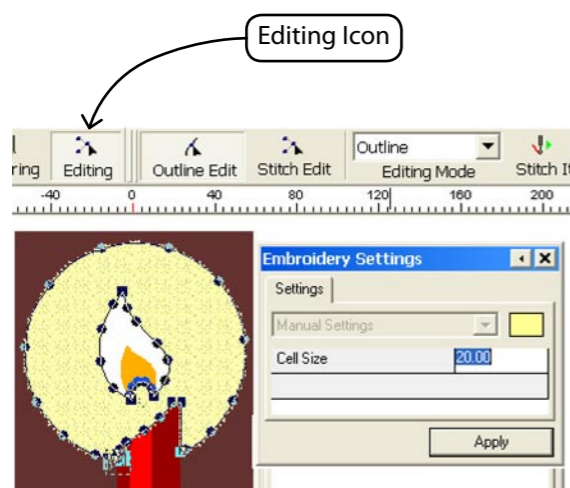



Image 1  
Editing Cell Size

### Changing the Outline (shape of a block)

If you have already digitized a block with Cross Stitch, and then want to **change the outline**, you can easily do it through **editing mode**.

Step	Action	Result
>1	Select <b>Editing</b>  icon.	The editing toolbar will open.
>2	Click on the block for desired change.	The block will be "highlighted" with original points.
>3	<b>Move, add and delete</b> points until satisfied.	
>4	Choose <b>Stitch It!</b> Alternatively; hit the "Enter" key on keyboard.	The block will be regenerated with changes.
>5	Choose <b>ESC</b> on keyboard. Alternatively; select the Editing icon (again).	Editing mode will end.

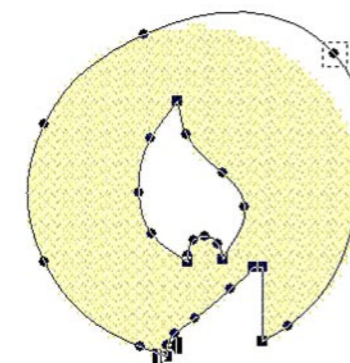


Image 1  
Editing Outline

**Note**   
For detailed information regarding **Editing mode**, see "Inside Block Editing".